



SPA & WELLNESS NATURE RESORTS

JÁCHYMOV RADON SPA | LUHAČOVICE SPA

Your spa for musculoskeletal and respiratory tract diseases



TREATMENT | RELAXATION | WELLNESS | ACTIVE VACATION | 2017

WELCOME TO SPA & WELLNESS NATURE RESORTS IN THE CZECH REPUBLIC



JÁCHYMOV RADON SPA | LUHAČOVICE SPA

Two locations on the opposite sides of the country with unique natural healing resources.
Both spa towns have a long tradition of offering top-class treatment care.

By merging the two companies (Léčebné lázně Jáchymov and Lázně Luhačovice),
the biggest spa group in the Czech Republic, the **SPA & WELLNESS NATURE RESORTS**,
was established.

Together, we are able to take care of almost 2,500 guests a day.
We help treat a wide spectrum of diseases in the midst of virgin nature, greenery,
and clean air.

YOU CAN SELECT FROM OUR WIDE OFFER OF SERVICES.

JÁCHYMOV RADON SPA

Your spa for the musculoskeletal system treatment

A unique bath in thermal water rich in minerals and with high radon concentration

The town of Jáchymov is located in a picturesque valley in the Ore Mountains under Klínovec Mountain (1,244 m). The former famous mining town has earned its place in modern history by progressive ways of the silver ore mining. In 1906, the radon water was used for treatment here as in the first place in the world. Jáchymov radon spa differs from all other European spas by the high radon concentration in its curative springs. That is why it is the most effective radon spa in the world and guests keep returning for an effective spa treatment.



SPA LUHAČOVICE

Your spa for the care of the respiratory system



The Spa Luhačovice is one of the most beautiful places in the Czech Republic.

The spa town is situated in a marvelous valley of the protected landscape area White Carpathians. Luhačovice will charm you with diverse architecture and widespread green surroundings. The neighboring countryside is untouched, opening its arms to everyone who will come to Luhačovice.

Unique healing springs make Luhačovice to be a top medical spa on a European level. They help to cure ill people and strengthen the condition of the healthy ones.

LIST OF TREATED DISEASES

| | RADON SPA JÁCHYMOV | SPA LUHAČOVICE |
|---|---|--|
| DISEASES OF THE MUSCULO-SKELETAL SYSTEM | | arthrosis, rheumatoid arthritis, Bechterew's disease, rheumatism, osteoporosis, conditions after injuries and orthopedic surgeries of the locomotor system |
| DISEASES OF THE RESPIRATORY TRACT | | asthma, bronchitis, pulmonary fibrosis, damaged vocal cords, conditions after airways surgeries |
| NERVE DISEASES | | root syndromes, Parkinson's disease, polyneuropathy |
| | neuralgia, neuritis, post-stroke conditions or conditions after head injury, multiple sclerosis | |
| DISEASES OF THE CIRCULATORY SYSTEM | | functional disorders of peripheral blood vessels, conditions after thrombosis, chronic lymphatic edema |
| DISEASES AND DISORDERS OF THE METABOLIC FUNCTIONS | | diabetes mellitus |
| DISEASES OF THE DIGESTIVE TRACT | | conditions after surgeries of the stomach, intestines and gall bladder, Crohn's disease |
| SKIN DISEASES | conditions after burns and after reconstruction surgeries with the risk of contractures | |
| DISEASE PREVENTION | | back pain, immune system disorders, symptoms of total exhaustion (fatigue, stress ...) |

The complete list of all treated diseases is to be found on our website.

JÁCHYMOV RADON SPA – YOUR WAY TO HEALTH AND ACTIVE VACATION



Jáchymov used to be one of the most prominent European towns due to the extensive rare ores mining. A silver “tolar” (which gave name to the American dollar, the currency of the American settlers) was minted in the Royal Mint here from 1519. The town’s location at the foot of the highest mountain of the Ore Mountains – Klínovec, gives Jáchymov also perfect conditions for active vacation. There is a new chairlift linking the town directly with the top of Klínovec, where there are not only fantastic ski slopes but also the start of single trails of different difficulties, hiking trails and scooter trails.

You can enjoy not only a unique treatment here but also the mountains. Come to us to enjoy hiking, bike trips or skiing in winter.

TREATMENT CARE IN JÁCHYMOV RADON SPA

MUSCULOSKELETAL SYSTEM DISEASES | NERVE SYSTEM DISEASES | CIRCULATION SYSTEM DISEASES | DIABETES | SKIN DISEASES

The effective Jáchymov treatment is based on a combination of the unique radon baths and top-quality rehabilitation. The radon water mitigates pain, improves joints mobility, blood circulation and wounds healing, stimulates the regeneration processes in tissues, harmonizes vegetative functions, and has a positive influence on blood pressure. The energy absorbed removes harmful oxidation stressors and at the same time, it activates all parts of the immune system. The radon treatment is quite gentle and the procedures are suitable for the older spa guests too. The professionally performed radon treatment can significantly decrease pain and thus the medication needed. After the treatment, the quality of life is improved for at least 8 - 10 months.



| RADON BATHS

During a radon bath, the human body is exposed to an energy shower of the radon alpha particles launching a chain of physiological responses. There are between 10-24 radon baths of 20 minutes each and of intensity of 4.5-5.5 kBq. The radon water with the temperature of 35-37°C is poured to the tub from its bottom, to prevent radon escaping in the air.



| REHABILITATION AND PHYSICAL THERAPY


Active rehabilitation care is an important part of the treatment. It is provided by a team of top-class physiotherapists who keep training themselves in modern treatment methods. Based on the initial examination of the client by a physician, the most suitable rehabilitation method is selected. It is based on different physiotherapeutic procedures and physical therapy means.



| BRACHYRADIUM THERAPY

A unique, over a hundred years old treatment method, the so-called "Jáchymov boxes," helps calm that kind of pain where the regularly available treatment methods seem ineffective. It is a gamma-rays application controlled by the radiotherapist, where radioactive salts are placed on the painful spots. This treatment is available for the patient only with the physician's consent and only if his or her health condition allows it. The number of applications is limited.

Modern therapeutic equipment is used in treatment. The professionally trained staff with many years of practice undergoes constant education, has a lot of experience and treats all clients sensitively. In spa treatment, we respect the nature of the disease, individual differences, and level of affection.



This icon by the treatment products represents medical examination or physician's consultation. After the initial examination, the physician will develop an individual treatment plan for each spa client.

TRADITIONAL RADON TREATMENT



Complex treatment

- 14/21x accommodation with full board
- 1x initial medical examination
- 1x check-up medical examination in case of treatment longer than two weeks
- 1x final medical examination with final medical report
- preparation of individual treatment plan
- lab examination (blood count, blood sugar, uric acid)
- 21 treatments per week on average, as prescribed by the physician (6x radon bath, 5x major treatment, 10x subsidiary treatment)



FREE FOR YOU *

- 1x swimming pool and sauna (90 min) in the Agricola Spa Centre
- 1x salt cave (45 min) in the Agricola Spa Centre
- 1x Vincentka mineral water (0.7 l) from Luhačovice spa

* valid for any length of stay



HOW TO SAVE IN THE RADIUM PALACE HOTEL ****

**3 nights
for FREE**

21 for 18

When booking your three-week treatment stay in the Radium Palace Hotel****, you will receive 3 nights for free in the following periods:

30 April – 21 May 2017 | 21 May – 11 June 2017
11 June – 02 July 2017 | 26 November – 17 December 2017



Christmas and New Year's Eve

Detailed information and prices are available at our website www.radonspa.com.

HEALTH FROM THE HEALING POWER OF THE RADON WATER

Prices in EUR per person

| | | | 02. 01. – 14. 04. 2017 16. 11. – 22. 12. 2017 | | | 15. 04. – 15. 11. 2017 | | |
|-------------------|-----------------|-----|--|-----------|-----------|------------------------|-----------|-----------|
| | | | 1 night | 14 nights | 21 nights | 1 night | 14 nights | 21 nights |
| | | | FB | FB | FB | FB | FB | FB |
| RADIUM PALACE**** | I. A | DBL | 85 | 1190 | 1785 | 98 | 1372 | 2058 |
| | | SGL | 98 | 1372 | 2058 | 117 | 1638 | 2457 |
| | Juniorsuite | DBL | 91 | 1274 | 1911 | 109 | 1526 | 2289 |
| | | SGL | 107 | 1498 | 2247 | 134 | 1876 | 2814 |
| | Superior | DBL | 101 | 1414 | 2121 | 124 | 1736 | 2604 |
| | | SGL | 121 | 1694 | 2541 | 158 | 2212 | 3318 |
| | Superior Plus | DBL | 120 | 1680 | 2520 | 151 | 2114 | 3171 |
| | | SGL | 147 | 2058 | 3087 | 193 | 2702 | 4053 |
| BĚHOUNEK****+ | I. A | DBL | 74 | 1036 | 1554 | 88 | 1232 | 1848 |
| | | SGL | 84 | 1176 | 1764 | 105 | 1470 | 2205 |
| | I.A Plus | DBL | 78 | 1092 | 1638 | 94 | 1316 | 1974 |
| | | SGL | 89 | 1246 | 1869 | 115 | 1610 | 2415 |
| | Suite | DBL | 82 | 1148 | 1722 | 103 | 1442 | 2163 |
| | | SGL | 95 | 1326 | 1989 | 118 | 1658 | 2493 |
| | Apartment | DBL | 85 | 1190 | 1785 | 107 | 1498 | 2247 |
| | | SGL | 98 | 1372 | 2058 | 117 | 1638 | 2457 |
| DALIBOR | I. A | DBL | 67 | 938 | 1407 | 79 | 1106 | 1659 |
| | | SGL | 74 | 1036 | 1554 | 91 | 1274 | 1911 |
| | Studio | DBL | 70 | 980 | 1470 | 84 | 1176 | 1764 |
| JITŘENKA | Apartment/Suite | DBL | 71 | 994 | 1491 | 86 | 1204 | 1806 |
| | | SGL | 81 | 1126 | 1689 | 96 | 1336 | 1995 |
| CURIE*** | I. A | DBL | 68 | 952 | 1428 | 80 | 1120 | 1680 |
| | | SGL | 75 | 1050 | 1575 | 93 | 1302 | 1953 |
| | Suite | DBL | 70 | 980 | 1470 | 85 | 1190 | 1785 |
| ASTORIA*** | I. A | DBL | 63 | 882 | 1323 | 75 | 1050 | 1575 |
| | | SGL | 67 | 938 | 1407 | 85 | 1190 | 1785 |
| | I. A Plus | DBL | 64 | 896 | 1344 | 78 | 1092 | 1638 |
| | | SGL | 70 | 980 | 1470 | 90 | 1260 | 1890 |
| | Apartment | DBL | 70 | 980 | 1470 | 85 | 1190 | 1785 |
| | | SGL | 80 | 1120 | 1680 | 95 | 1330 | 1995 |

Notes: DBL - double room, SGL - single room, FB - full board. Deduction for half-board 5 EUR/person/night in the Radium Palace Hotel and 3 EUR/person/night in the other hotels and pensions. The price does not include the spa fee.

The minimum length of treatment stay is 13 nights. Description of the hotel categories is provided on page 13.

BASIC RADON TREATMENT



Budget-wise treatment

- 14/21x accommodation with full board
- 1x medical consultation
- lab examination (blood count, blood sugar, uric acid)
- 14 treatments per week on average, as prescribed by the physician (6x radon bath, 8x other treatment)

IMPORTANT INFORMATION ABOUT THE TREATMENT

The treatment programme does not include individual rehabilitation.

FREE FOR YOU *

- 1x Vincentka mineral water (0.7 l) from Luhačovice spa

* valid for any length of stay



HOW TO SAVE IN THE RADIUM PALACE HOTEL ****

3 nights
for FREE

21 for 18

When booking your three-week treatment stay in the Radium Palace Hotel****, you will receive 3 nights for free in the following periods:

30 April – 21 May 2017 | 21 May – 11 June 2017
11 June – 02 July 2017 | 26 November – 17 December 2017



Christmas and New Year's Eve

Detailed information and prices are available at our website www.radonspa.com.

RADON TREATMENT TO START-OFF THE HEALING EFFECT

Prices in EUR per person

| | | | 02. 01. – 14. 04. 2017 16. 11. – 22. 12. 2017 | | | 15. 04. – 15. 11. 2017 | | |
|-------------------|---------------|-----|--|-----------|-----------|------------------------|-----------|-----------|
| | | | 1 night | 14 nights | 21 nights | 1 night | 14 nights | 21 nights |
| | | | FB | FB | FB | FB | FB | FB |
| RADIUM PALACE**** | I. A | DBL | 77 | 1078 | 1617 | 84 | 1176 | 1764 |
| | | SGL | 90 | 1260 | 1890 | 103 | 1442 | 2163 |
| | Juniorsuite | DBL | 83 | 1162 | 1743 | 95 | 1330 | 1995 |
| | | SGL | 99 | 1386 | 2079 | 120 | 1680 | 2520 |
| | Superior | DBL | 93 | 1302 | 1953 | 110 | 1540 | 2310 |
| | | SGL | 113 | 1582 | 2373 | 144 | 2016 | 3024 |
| | Superior Plus | DBL | 112 | 1568 | 2352 | 137 | 1918 | 2877 |
| | | SGL | 139 | 1946 | 2919 | 179 | 2506 | 3759 |
| BĚHOUNEK**** | I. A | DBL | 128 | 1792 | 2688 | 162 | 2268 | 3402 |
| | | SGL | 133 | 1862 | 2793 | 171 | 2394 | 3591 |
| | I.A Plus | DBL | 66 | 924 | 1386 | 74 | 1036 | 1554 |
| | | SGL | 76 | 1064 | 1596 | 91 | 1274 | 1911 |
| | Suite | DBL | 70 | 980 | 1470 | 80 | 1120 | 1680 |
| | | SGL | 81 | 1134 | 1701 | 101 | 1414 | 2121 |
| | Apartment | DBL | 74 | 1036 | 1554 | 89 | 1246 | 1869 |
| | | DBL | 77 | 1078 | 1617 | 93 | 1302 | 1953 |
| DALIBOR | I. A | DBL | 59 | 826 | 1239 | 65 | 910 | 1365 |
| | | SGL | 66 | 924 | 1386 | 77 | 1078 | 1617 |
| | Studio | DBL | 62 | 868 | 1302 | 70 | 980 | 1470 |
| | | DBL | 63 | 882 | 1323 | 72 | 1008 | 1512 |
| JITŘENKA | Apartment | DBL | 65 | 910 | 1365 | 74 | 1036 | 1554 |
| CURIE*** | I. A | DBL | 60 | 840 | 1260 | 66 | 924 | 1386 |
| | | SGL | 67 | 938 | 1407 | 79 | 1106 | 1659 |
| | Suite | DBL | 62 | 868 | 1302 | 71 | 994 | 1491 |
| ASTORIA*** | I. A | DBL | 55 | 770 | 1155 | 61 | 854 | 1281 |
| | | SGL | 59 | 826 | 1239 | 71 | 994 | 1491 |
| | I. A Plus | DBL | 56 | 784 | 1176 | 64 | 896 | 1344 |
| | | SGL | 62 | 868 | 1302 | 76 | 1064 | 1596 |
| | Apartment | DBL | 62 | 868 | 1302 | 71 | 994 | 1491 |
| | | DBL | 62 | 868 | 1302 | 71 | 994 | 1491 |

Notes: DBL – double room, SGL – single room, FB – full board. Deduction for half-board 5 EUR/person/night in the Radium Palace Hotel and 3 EUR/person/night in the other hotels and pensions. The price does not include the spa fee.

The minimum length of treatment stay is 13 nights. Description of the hotel categories is provided on page 13.

INTENSIVE RADON TREATMENT



Intensive treatment after injuries, sports injuries, and surgeries (from 21 nights)

- 21x accommodation with full board . initial, follow-up and final medical examination (including medical report) . preparation of individual treatment plan . lab examination (blood count, blood sugar, uric acid)
- 28 treatments per week on average, as prescribed by the physician (6x radon bath, 10x major treatment, 12x subsidiary treatment)
- **FREE FOR YOU** (see below)



IMPORTANT NOTICE REGARDING TREATMENT

Intensive radon treatment is offered only in the Radium Palace**** and Běhounek****+ hotels and Dalibor pension. The number of places is limited.

SPA TREATMENT



Treatment without radon baths

- 14/21x accommodation with full board . 1x initial medical examination
- 1x check-up medical examination in case of treatment longer than two weeks . 1x final medical examination with final medical report
- preparation of individual treatment plan . lab examination (blood count, blood sugar, uric acid) . 21 treatments per week on average, as prescribed by the physician (6x hydrotherapy, 5x major treatment, 10x subsidiary treatment) . **FREE FOR YOU** (see below)



HOW TO SAVE IN THE RADIUM PALACE HOTEL****

**3 nights
for FREE**

21 for 18

When booking your three-week treatment stay in the Radium Palace Hotel****, you will receive 3 nights for free in the following periods:

30 April – 21 May 2017 | 21 May – 11 June 2017
11 June – 02 July 2017 | 26 November – 17 December 2017

FREE FOR YOU *

- 1x swimming pool and sauna (90 min) in the Agrícola Spa Centre
- 1x salt cave (45 min) in the Agrícola Spa Centre
- 1x Vincentka mineral water (0.7 l) from Luhačovice spa

* valid for Intensive radon treatment and Spa treatment of any length

MEDICAL PROGRAMME

Prices in EUR per person

| | | | 02. 01. – 14. 04. 2017 16. 11. – 22. 12. 2017 | | | 15. 04. – 15. 11. 2017 | | |
|-------------------|-----------------|-----|--|------------------|---------------|------------------------|------------------|---------------|
| | | | 1 night IRT | 21 nights IRT | 1 night ST | 1 night IRT | 21 nights IRT | 1 night ST |
| | | | FB | FB | FB | FB | FB | FB |
| RADIUM PALACE**** | I. A | DBL | 110 | 2310 | 79 | 123 | 2583 | 92 |
| | | SGL | 123 | 2583 | 92 | 142 | 2982 | 111 |
| | Juniorsuite | DBL | 116 | 2436 | 85 | 134 | 2814 | 103 |
| | | SGL | 132 | 2772 | 101 | 159 | 3339 | 128 |
| | Superior | DBL | 126 | 2646 | 95 | 149 | 3129 | 118 |
| | | SGL | 146 | 3066 | 115 | 183 | 3843 | 152 |
| | Superior Plus | DBL | 145 | 3045 | 114 | 176 | 3696 | 145 |
| | | SGL | 172 | 3612 | 141 | 218 | 4578 | 187 |
| BĚHOUNEK****+ | I. A | DBL | 94 | 1974 | 68 | 108 | 2268 | 82 |
| | | SGL | 104 | 2184 | 78 | 125 | 2625 | 99 |
| | I.A Plus | DBL | 98 | 2058 | 72 | 114 | 2394 | 88 |
| | | SGL | 109 | 2289 | 83 | 135 | 2835 | 109 |
| | Suite | DBL | 102 | 2142 | 76 | 123 | 2583 | 97 |
| | | DBL | 105 | 2205 | 79 | 127 | 2667 | 101 |
| | Apartment | DBL | 87 | 1827 | 61 | 99 | 2079 | 73 |
| | | SGL | 94 | 1974 | 68 | 111 | 2331 | 85 |
| DALIBOR | Studio | DBL | 90 | 1890 | 64 | 104 | 2184 | 78 |
| | | DBL | 91 | 1911 | 65 | 106 | 2226 | 80 |
| | Apartment/Suite | DBL | - | - | 67 | - | - | 82 |
| JITŘENKA | Apartment | DBL | - | - | 62 | - | - | 74 |
| | | SGL | - | - | 69 | - | - | 87 |
| CURIE*** | Suite | DBL | - | - | 64 | - | - | 79 |
| | | DBL | - | - | 57 | - | - | 69 |
| ASTORIA*** | I. A | SGL | - | - | 61 | - | - | 79 |
| | | DBL | - | - | 58 | - | - | 72 |
| | I. A Plus | SGL | - | - | 64 | - | - | 84 |
| | | DBL | - | - | 64 | - | - | 79 |
| | Apartment | DBL | - | - | 64 | - | - | 79 |
| | | DBL | - | - | 64 | - | - | 79 |

Notes: DBL - double room, SGL - single room, FB - full board, IRT - Intensive radon treatment, ST - Spa treatment. Deduction for half-board 5 EUR/person/night in the Radium Palace Hotel and 3 EUR/person/night in the other hotels and pensions. The price does not include the spa fee. **The minimum length of treatment stay is 13 nights.** Description of the hotel categories is provided on page 13.

TREATMENT ON TRIAL

NEW



To get acquainted with spa treatment

- accommodation with full board - 7 nights . 1x medical consultation
- 3x radon bath . 1x bath with additive . 1x wet carbonated bath with wrap
- 1x dry carbonated bath . 2x classical manual massage (partial)
- 3x paraffin wraps (hands) . 2x oxygen therapy . 1x group exercise with a physiotherapist



FREE FOR YOU *

- 1x Vincentka mineral water (0.7 l) from Luhačovice spa

* valid for any length of stay

IMPORTANT NOTICE REGARDING TREATMENT *The Treatment on trial is offered in the Radium Palace**** and Běhounek****+ hotels only. In the other hotels, it is available based on free capacity.*

VITAL WEEK

7 nights of relaxation

VITAL CLASSIC

- 7x accommodation with half board . 1x radon bath . 1x bubble bath
- 2x dry carbonated bath . 2x classical manual massage (partial)
- 1x paraffin wraps (hands) . 1x oxygen therapy . 1x sauna
- 1x small refreshment

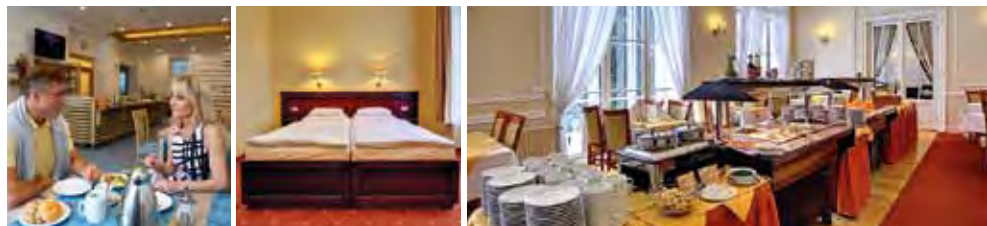
The complete offer of relaxation programmes is available at our website www.radonspa.com.



HOTEL ACCOMMODATION

Accommodation without spa treatment

- 1x accommodation with buffet breakfast



PROGRAMME OFFER

Prices in EUR per person

| | | | 02. 01.–14. 04. 2017 16. 11.–22. 12. 2017 | 15. 04.–15. 11. 2017 | 01. 01.–22. 12. 2017 | 01. 01.–22. 12. 2017 |
|-------------------|---------------|-----|--|----------------------|----------------------|----------------------|
| | | | 7 nights TOT | 7 nights TOT | 7 nights VITAL | 1 nights B&B |
| | | | FB | FB | HB | B |
| RADIUM PALACE**** | I. A | DBL | 546 | 609 | 497 | 54 |
| | | SGL | 637 | 742 | 630 | 76 |
| | Juniorsuite | DBL | 588 | 686 | 574 | 67 |
| | | SGL | 700 | 861 | 749 | 97 |
| | Superior | DBL | 658 | 791 | 679 | 85 |
| | | SGL | 798 | 1029 | 917 | 123 |
| | Superior Plus | DBL | 791 | 980 | 854 | 110 |
| | | SGL | 980 | 1274 | 1148 | 159 |
| BĚHOUNEK****+ | I. A | DBL | 469 | 539 | 434 | 44 |
| | | SGL | 539 | 658 | 553 | 64 |
| | I.A Plus | DBL | 497 | 581 | 476 | 51 |
| | | SGL | 574 | 728 | 623 | 75 |
| | Suite | DBL | 525 | 644 | 539 | 61 |
| | Apartment | DBL | 546 | 672 | 567 | 65 |
| DALIBOR | I. A | DBL | - | - | 371 | 34 |
| | | SGL | - | - | 455 | 48 |
| | Studio | DBL | - | - | 406 | 39 |
| CURIE*** | I. A | DBL | - | - | 378 | 34 |
| | | SGL | - | - | 469 | 49 |
| | Suite | DBL | - | - | 413 | 41 |
| ASTORIA*** | I. A | DBL | - | - | 343 | 34 |
| | | SGL | - | - | 413 | 48 |
| | I. A Plus | DBL | - | - | 434 | 48 |
| | | SGL | - | - | 553 | 69 |
| | Apartment | DBL | - | - | 539 | 63 |
| | | DBL | - | - | 539 | 63 |

Notes: DBL - double room, SGL - single room, TOT - Treatment on trial, B&B - bed and breakfast, FB - full board, HB - half board, B - breakfast. Deduction for half board for the Treatment on trial per person and stay 35 EUR in the Radium Palace Hotel and 21 EUR in the Běhounek Hotel. VITAL WEEK - full board surcharge 70 EUR/person/stay, in Radium Palace in the category Superior Plus and Suite 91 EUR/person/stay. HOTEL ACCOMMODATION - half board/ full board surcharge 13/26 EUR/persons/day in Radium Palace in the category Superior Plus and Suite, 10/20 EUR/person/day at other hotels and categories. The price does not include the spa fee. **Description of the hotel categories is provided on page 13.** The complete price list for hotel accommodation is available at www.radonspa.com.

PRICE LIST OF TREATMENTS IN THE JÁCHYMOV RADON SPA

Prices of the treatments in EUR are approximate only and are valid for the treatments purchased individually. (1)

| UNIQUE TREATMENT | | EUR |
|---|------|-----|
| Radon bath with dry wrap | A | 23 |
| Package of 10 radon baths with dry wrap | A, B | 204 |
| Brachyradiumtherapy (2) | A, M | 49 |
| INDIVIDUAL REHABILITATION | | |
| Massage reflexive and fibrous | A, M | 15 |
| Soft tissue techniques | A, M | 13 |
| Spinal and peripheral joints motion mobilization | A, M | 8 |
| Lymphatic massage manual (partial) | M * | 22 |
| Individual exercise | A, M | 10 |
| Individual exercise in pool (Radium Palace, Běhounek) | A, M | 11 |
| OTHER TREATMENTS | | |
| Carbon bath (water based) with dry wrap | S * | 15 |
| Dry (gas based) carbon bath | S * | 10 |
| Bubble bath | S * | 11 |
| Bubble bath with additive | S * | 12 |
| Whirling bath (hands/feet) | S * | 9 |
| Underwater full-body massage | M * | 12 |
| Classical manual massage (partial) | M * | 8 |
| Instrumental lymphatic drainage | S * | 12 |
| Group exercise | A, S | 4 |
| Group exercise in pool | A, S | 5 |
| Ultrasound, "diadynamik," interference currents | A, S | 4 |
| Magnetic therapy | A, S | 4 |
| Laser - local application „stylus“ | A, S | 8 |
| Cryotherapy (pack) | A, S | 4 |
| Paraffin wraps (hands) | S * | 9 |
| Gas injections | A, S | 6 |
| Infrared radiation – Solux lamp | S * | 2 |
| Aerosol inhalation – individual | S * | 4 |

Notes:

- (1) The treatments are paid on the spot by the client in CZK, based on current price list.
 (2) Brachyradiumtherapy is provided in the "Radiology Pavilion."
 A Treatments requiring medical consultation | M – major treatment | S subsidiary treatment
 B price-wise package of 10 radon baths – 10 major treatments
 * Freely available treatments

The complete treatments pricelist is available at www.radonspa.com.

HEALTH INSURANCE COMPANY SUBSIDY FOR SPA TREATMENT

In some countries (e.g. the Czech Republic, Slovakia, Germany, the Netherlands, etc.), it is possible to receive financial support from the health insurance company for a spa treatment stay. More details are available in the Czech, German, and possibly English version of the price list that can be downloaded from our website:

<http://www.laznejachymov.cz/prospekty-ke-stazeni/>

<http://www.laznejachymov.cz/de/prospekte/>

<http://www.laznejachymov.cz/en/brochures-download/>



OUT-PATIENT TREATMENT

The radon baths and other treatments are available also for the outpatients. The outpatient services are concentrated in the Agrícola Spa Centre.

BOOKING AND WORKING HOURS:

Mo – Fri: 8:00 a.m. – 3:00 p.m.

Agrícola Spa Centre

Tel.: +420 353 836 000

E-mail: agricola@laznejachymov.cz



ACTIVE VACATION FOR ADULTS AND CHILDREN

Experience the Ore Mountains on skis,
bike and on foot.



- 3 km long ski slope Klínovec – Jáchymov
- marked hiking trails, downhill, flowtrail and cross country trails
- rope centre and other leisure activities
- discounts for chairlifts and selected ski-lifts in the ski and sport centres Klínovec – Fichtelberg
- children discounts
- spa and wellness treatment
- Agricola Spa Centre



HOTEL & RELAX RESORT JÁCHYMOV



Jáchymov Spa also presents its offer of selected accommodation, restaurant, and relaxation services under the Hotel & Relax Resort Jáchymov brand.

- | ACCOMMODATION IN THE ASTORIA*** HOTEL AND THE DAGMAR AND DALIBOR GUEST HOUSES
- | APARTMENTS, SUITES, STUDIOS AND FAMILY ROOMS FOR FAMILIES WITH CHILDREN
- | BUFFET-STYLE MEALS, BIKE RENTAL, BIKE AND SKIS STORAGE, PARKING

The offer of the "Ore Mountains Vacation" programme, the hotel pricelist, and more information is available at www.resortjachymov.com.

TIPS FOR YOUR LEISURE TIME AND ACTIVE VACATION

More information is available at www.resortjachymov.com and www.radonspa.com.

AGRICOLA SPA CENTRE

AQUA CENTRUM AGRICOLA

- swimming pool with two swimming lanes (25 m)
- small pool for children with a waterfall . Aquafitness
- tobogan . whirlpool . Kneipp Cure . Finnish sauna . infra sauna . steam box . fitness studio and solarium . salt cave . summer terrace with deck-chairs . cryo-chamber
- hairdresser's . beauty salon . café . Internet access available in the lobby and café



PHYSICIAN CURATIVE AND WELLNESS TREATMENTS

Book your treatments on time and enjoy a pleasant relaxation. You can make your loved ones happy by purchasing the relaxation treatments in the form of a gift voucher. The Aquacentre guests can use the marked parking spaces for free.

Agricola reception – daily 7:00 a.m. – 9:00 p.m.
Tel.: +420 353 836 000, E-mail: agricola@laznejachymov.cz



Christmas and the New Year's Eve

Come to our spa during Christmas and New Year. We have prepared a traditional rich holiday programme offer which can be combined with spa or relaxation stay. Detailed information and prices are available at www.radonspa.com.



RADIUM PALACE★★★★



| SPA HOTEL BUILT IN THE VIENNA NEO-CLASSICIST STYLE
| ALL SERVICES UNDER ONE ROOF
| EUROPESPA MED, MEDISPA PRESTIGIOUS CERTIFICATES HOLDER



| | |
|---|--|
| LOCATION | in the spa centre (see page 4) |
| ROOMS number of beds 282 | Suite (Standard, Premium, Madame Curie) Superior Plus Superior Juniorsuite I.A |
| 4 rooms with 8 beds for the handicapped | TV/SAT Internet access for free phone minibar safe hairdryer bathrobe |
| HOTEL SERVICES | reception, money exchange, restaurant (buffet breakfast, served lunches and dinners), café, concert and dance hall, hairdresser's, cosmetics parlour, pedicure, Internet corner, sun terrace, bikes and skis storage |
| SPA CARE | physician, radon baths, other treatment and wellness procedures |
| WELLNESS ZONE | available at the specified time based on free capacity for free – relaxation pool, whirlpool, Kneipp Cure, sauna (90 min per day, booking ahead of time necessary), dry sauna and infra-sauna for a fee |
| IMPORTANT | elevator, non-smoking, small dogs accepted with the hotel's permission |
| PARKING | under the hotel (about 300 m) for a fee |

BĚHOUNEK★★★★+



| SPA HOTEL WITH A VIEW OF THE ORE MOUNTAINS PANORAMA
| ALL SERVICES UNDER ONE ROOF
| EUROPESPA MED, MEDISPA PRESTIGIOUS CERTIFICATES HOLDER



| | |
|--|---|
| LOCATION | in the spa centre (see page 4) |
| ROOMS number of beds 322 incl. dependances 6 rooms with 12 beds for the handicapped | Apartment Suite I.A Plus I.A |
| | TV/SAT Internet access for free phone minibar safe hairdryer bathrobe |
| | dependances/guest houses DALIBOR and JITŘENKA connected by a corridor |
| HOTEL SERVICES | reception, money exchange, restaurant (buffet breakfast, lunches, and dinners), café, lounges Domino and Bridge, hairdresser's, cosmetics parlour, pedicure, Internet corner, sun terrace, bikes and skis storage |
| SPA CARE | physician, radon baths, other treatment and wellness procedures |
| WELLNESS ZONE | available at the specified time based on free capacity for free – rehabilitation pool, whirlpool, Kneipp Cure, sauna for a fee (60 min per day, booking ahead of time necessary) |
| IMPORTANT | the hotel is located on a slope, elevator, non-smoking, small dogs accepted with the hotel's permission |
| PARKING | by the hotel and pavilions for a fee |

CURIE★★★



| A COMPLEX OF THREE SPA BUILDINGS IN THE HEART OF JÁCHYMOV
| ALL SERVICES UNDER ONE ROOF
| MEDISPA PRESTIGIOUS CERTIFICATE HOLDER



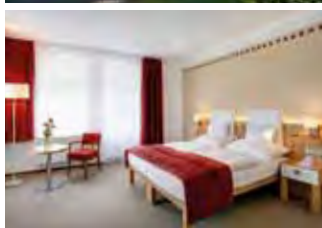
| | |
|---|---|
| LOCATION | in the spa quarter (see page 4) |
| ROOMS number of beds 294 | Suite I.A |
| 3 rooms with 6 beds for the handicapped | TV/SAT Internet access for free phone fridge safe or a lockable cabinet bathrobe |
| HOTEL SERVICES | reception, money exchange, restaurant (buffet breakfast, lunches, and dinners), café, hairdresser's, cosmetics parlour, pedicure, Internet corner |
| SPA CARE | physician, radon baths, treatment procedures, rehabilitation pool, other procedures in the Agrícola Aquacentre (about 200 m) |
| IMPORTANT | elevator, non-smoking, small dogs accepted with the hotel's permission |
| PARKING | in front of the complex, for a fee |

ASTORIA***

MODERN HOTEL COMPLEX
NEW APARTMENTS WITH A KITCHENETTE
SPA AND WELLNESS TREATMENTS IN THE AGRICOLA SPA CENTRE OR CURIE***

NEW ON OFFER

The apartments with a balcony and fantastic view of the spa park



| | |
|--|--|
| LOCATION | in the spa centre (see page 4) |
| ROOMS number of beds 140 | Apartment / I.A Plus / I.A TV/SAT Internet access for free phone minibar safe hairdryer bathrobe |
| HOTEL SERVICES | reception in the Agricola Spa Centre (about 50 m), restaurant (buffet breakfast, lunches, and dinners), bikes and skis storage |
| SPA CARE | physician, radon baths, other curative and wellness procedures, pool in the Agricola Spa Centre (about 50 m) |
| IMPORTANT | elevator, non-smoking, no pets |
| PARKING | at the parking lot (about 300 m) for a fee |

DAGMAR

A MODERN GUEST HOUSE WITH A RESTAURANT AND WELLNESS ZONE
IDEAL PLACE FOR YOUR ACTIVE VACATION
RECOMMENDED FOR FAMILIES WITH CHILDREN



| | |
|---|--|
| LOCATION | near the Curie Complex (about 300 m, see page 4) |
| ROOMS number of beds 52 | Studio I. A TV/SAT Internet access for free phone fridge |
| HOTEL SERVICES | restaurant (buffet breakfast, lunches, and dinners), bikes and skis storage, reception and other services in the Curie Complex (about 300 m) |
| SPA CARE | physician, radon baths, other curative procedures in the Curie Complex (about 300 m), wellness procedures, and pool in the Agricola Spa Centre (about 500 m) |
| WELLNESS ZONE | whirlpool, sauna, steam, relaxation room for a fee |
| IMPORTANT | elevator, non-smoking, pets allowed |
| PARKING | by the pension and in front of the Curie Complex for a fee |

SELECT YOUR ROOM

| ROOM CATEGORY | ROOM EQUIPMENT | | | | | | | | | | HOTELS PENSIONS |
|---------------------------------------|----------------------|--------|------------------------|-------|---------|------|----------|-----------|------------------|-------------|--|
| | BATHROOM WITH TOILET | TV/SAT | (2) INTERNET ACCESS | PHONE | MINIBAR | SAFE | BATHROBE | HAIRDRYER | AIR-CONDITIONING | KITCHENETTE | |
| I.A | ● | ● | ● | ● | ● | ● | ● (3) | ● (4) | | | RADIUM PALACE BĚHOUNEK DALIBOR, CURIE ASTORIA, DAGMAR |
| I.A Plus ⁽¹⁾ | ● | ● | ● | ● | ● | ● | ● | ● | | | BĚHOUNEK ASTORIA |
| Juniorsuite | ● | ● | ● | ● | ● | ● | ● | ● | ● (5) | | RADIUM PALACE |
| Suite | ● | ● | ● | ● | ● | ● | ● | ● | | ● | BĚHOUNEK, DALIBOR, CURIE |
| Apartment ⁽¹⁾ | ● | ● | ● | ● | ● | ● | ● | ● | | ● | BĚHOUNEK, DALIBOR, JITŘENKA, ASTORIA |
| Studio | ● | ● | ● | ● | ● | ● | ● | ● | | ● (6) | DALIBOR, DAGMAR |
| Superior | ● | ● | ● | ● | ● | ● | ● | ● | | | RADIUM PALACE |
| Superior Plus | ● (7) | ● | ● | ● | ● | ● | ● | ● | | | RADIUM PALACE |
| Suite Premium, Madame Curie, Standard | ● (7) | ● | ● | ● | ● | ● | ● | ● | | | RADIUM PALACE |

Notes:

(1) newly reconstructed rooms of the I.A Plus category and Apartment in the Astoria hotel (2) current information about the WI-FI signal in the spa houses available at www.radonspa.com (3) in the Běhounek hotel, Dalibor and Dagmar pensions – can be borrowed from the reception (4) in the Curie Complex, Astoria hotel and Dagmar and Dalibor pensions – can be borrowed from the reception (5) air-conditioning in the attic rooms with roof windows on the 5th floor of the hotel (6) electric kettle, microwave oven and dishes (7) bathroom with a bathtub

HOTEL ACCOMMODATION

Take advantage of the accommodation offer in some of our hotels and pensions.

Hotel accommodation pricelist is available on page 9 or at www.radonspa.com.



DISCOUNTS AND ADVANTAGES FOR THE JÁCHYMOV SPA GUESTS

LOYALTY PROGRAMME FOR OUR GUESTS



Club membership gives you advantages you can start using right after your registration. Please ask at the reception or look at www.radonspa.com.

5% DISCOUNT FOR EARLY BOOKING

Book your spa stay ahead of time. When booking your stay at least 6 months before arrival, you will receive 5% discount (not applicable for stays covered by the health insurance company and booking through travel agents/agencies and portals). The discount is conditioned by paying an advance of 30% within 6 weeks from the booking confirmation date. By early booking you can get not only a discount but you can also select your room without limitation and dates of stay. The discount does not apply to the already discounted stays (e.g. group discount).

BONUS FOR A NEW GUEST

Have you enjoyed our spa and do you feel the spa stays help your health? Have you been satisfied here? Then you can recommend the radon treatment in Jáchymov spa to your friends. Bring your friends to us and you will get a 5% bonus from the price of stay of the guest you recommended for your own stay.

Bonus payment conditions:

- Individual booking of a new guest who never stayed in our spa (not applicable to guests coming through travel agents and agencies).
- Booking in writing with the name of the guest who recommended the booking.
- You will receive your bonus after the new guest's payment and stay.
- The bonus is counted from the basic stay price, it does not apply to the locally purchased services.

ADDITIONAL BED DISCOUNT

10% discount from the accommodation price

CHILDREN DISCOUNT

Children under 2 stay for FREE. Children under 12 accompanied by their parents have a 30% discount in our spa.

10% DISCOUNT FOR THE BECHTEREW DISEASE CLUB MEMBERS

The discount will be applied in the case of meeting both of the following conditions:

- booking of the stay must be made directly in one of the booking offices of the spa
- submitting of a national Morbus Bechterew association identification card (member of the A.S.I.F. international association - www.asif.info)

The discount is calculated from the main package – not from the additionally ordered spa procedures and services.

NOTICE:

Discounts can be added up to a maximum of 20% (with the exception of the visitor's discount of 30%). They apply only to direct stays bookings in Jáchymov spa. They do not apply to the spa fee.

FOLLOW NEWS, DISCOUNTS, AND LAST MINUTE DISCOUNTS AT
www.radonspa.com.

GIFT VOUCHERS

Give your loved ones a gift in the form of an unforgettable experience they will certainly enjoy. We will write any text you wish on the gift voucher. You can select from gift vouchers for spa or relaxation stay, romantic weekend or some of our packages. The receiver with a voucher for a specific amount can select the way he or she will enjoy the gift – they can exchange it for an overnight stay, gastronomy experience, spa treatments, medical or relaxation programmes and other services. In Jáchymov spa, you can purchase a gift voucher for the spa programmes, in any amount and for any treatments. More information is available at www.radonspa.com.

Bookings at e-mail: info@laznejachymov.cz



TRANSFER SERVICE

Rates for max. 8 Persons there and back

| | |
|------------------------------|---------|
| Praha (Václav Havel airport) | EUR 185 |
| Karlovy Vary | EUR 36 |

This offer is valid for arrival and departure of the spa guests only. You are kindly requested to reserve your transfer min. 10 days beforehand. We offer also individual transfer during your spa stay. Please contact reception for further details.

TRANSFER FROM HOME

(The service is offered from neighbouring countries - on request.) Is it difficult for you to get to Jáchymov? Take advantage of our special offer for transportation from home and back. The driver will pick you up at the door and you will be transported directly to the spa hotel.

| | | |
|---------------------|-------|--------|
| Number of persons | 1 – 8 | 9 – 19 |
| Price in EUR per km | 0.45 | 0.90 |

OTHER INFORMATION

PAYMENT

The advance payment of 20% must be paid (credited to our account) 28 days at the latest before the planned start of stay.

PAYMENT OF THE SELF-PAYING GUESTS AND HEALTH-INSURANCE COMPANIES SUBSIDISED TREATMENT

• Pay card through the online booking system.

We accept the following companies' cards:

VISA, EUROCARD/MASTER CARD, DINERS CLUB INTERNATIONAL, AMERICAN EXPRESS, and JCB CARD.

• By bank transfer:

Bank: Komerční banka a.s.

SWIFT/BIC: KOMBCZPP

Account EUR IBAN: CZ08 0100 0000 0051 2656 0217

Account CZK IBAN: CZ18 0100 0000 0000 2490 6341

Beneficiary: Léčebné lázně Jáchymov a.s.

STAY CANCELLATION

The guest has the right to cancel the contract without giving reason in the period starting on the day of concluding the contract and ending at the moment of starting the stay and using the services. The cancellation notice must be sent by the guest in writing to the address of the registered office of the Léčebné lázně Jáchymov a.s. spa company. In the case of the stay and services cancellation, a cancellation fee is charged from the total price of the stay and services ordered in the following way:

| Stays and services cancellation before starting the stay and use of services | The percentage of cancellation fee from the price of stay and services |
|--|--|
| by 28th day | 0 % |
| from 27th to 7th day | 20 % |
| from 6th to 1st day | 40 % |
| not starting the stay without prior cancellation | 100 % |

The Terms and Conditions are available at www.radonspa.com. They are also available at the spa houses receptions.

INSURANCE

The spa stay price does not include travel insurance. Therefore, we recommend purchasing international travel insurance for the case of sickness or accident during your stay. Please have the European Health Insurance Card issued as well.

FEES

The price per person in a double-bed or triple-bed room is valid only in the case of full occupancy of the room. In the case of less people in the room, a surcharge is charged. The charge for moving, change of room at the guest's request: CZK 1 000 in the Radium Palace spa hotel and CZK 500 in the other hotels. The accommodation fee of your pet is CZK 350 /day (a prior permission of the spa hotel is required). Meals room service fee – CZK 120. Use of the suite in the Curie spa complex for a fee of CZK 250 /day.

BOARD

We offer diet meals in all of our hotels. Please contact our nutrition therapists regarding healthy nutrition.

CHECK-IN from 2:00 p.m. | **CHECK-OUT** by 11:00 a.m.

The arrival and departure days are counted as one day. The stays start on the arrival day by dinner and end on the departure day by breakfast or lunch package.

HOW TO BOOK YOUR STAY?

1. IN PERSON

You can book your stay directly in the spa hotel.

2. ON-LINE via the Internet

You can book your stay safely, quickly and comfortably directly from your home through the website www.radonspa.com.

3. BY E-MAIL

We will be happy to arrange your booking and answer your questions through e-mail. You can contact the booking department of the individual hotels or at info@laznejachymov.cz.

4. BY PHONE

You can contact us by phone at the numbers of the individual spa hotels or at the number: +420 353 833 333.

5. BY LETTER

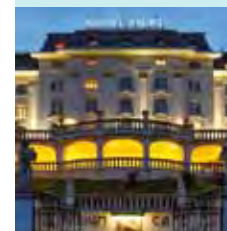
You can send your booking request by post to the address:

Léčebné lázně Jáchymov a.s., T. G. Masaryka 415, CZ-362 51 Jáchymov

BOOKING

JÁCHYMOV SPA

YOUR JOURNEY TO HEALTH AND ACTIVE VACATION



RADIUM PALACE**** SPA HOTEL

T. G. Masaryka 413

CZ – 362 51 Jáchymov

Tel.: +420 353 835 555

Fax: +420 353 835 777

E-mail: radiumpalace@laznejachymov.cz



BĚHOUNEK****+ SPA HOTEL (DALIBOR, JITŘENKA)

Lidická 1015

CZ – 362 51 Jáchymov

Tel.: 353 834 444

Fax: 353 834 777

E-mail: behounek@laznejachymov.cz



CURIE SPA COMPLEX*** (DAGMAR)

Agricolovo nám. 1036

CZ – 362 51 Jáchymov

Tel.: +420 353 836 666

Fax: +420 353 832 777

E-mail: curie@laznejachymov.cz



HOTEL ASTORIA***

T. G. Masaryka 403

CZ – 362 51 Jáchymov

Tel.: +420 353 836 000, +420 353 836 111

Fax: +420 353 831 583

E-mail: agricola@laznejachymov.cz

TRAVEL AGENCIES AND GROUPS INFORMATION

T. G. Masaryka 415, CZ – 362 51 Jáchymov

Tel.: +420 353 831 347, Fax: +420 353 834 567

E-mail: holy@laznejachymov.cz

SPA LUHAČOVICE FOR YOUR HEALTH



Luhačovice offer a unique wealth – healing natural mineral springs. Use the wealth of the carbonic springs in spa Luhačovice for your health.

Several cold springs rise in the Luhačovice area. Their temperature varies between 10 – 14 °C. Vincentka is the most known of them.

All our springs are natural, strongly mineralized, carbonic, iodine mineral waters with the hydrogencarbonate-chlorid-sodium basis. They contain sodium, calcium, magnesium, iron and a significant volume of dissolved carbon dioxide.

Vincentka is the inhalation basis in the major part of Czech inhalatoriums. However, its effect when drunk directly from the spring cannot be substituted.



THERAPY IN THE SPA LUHAČOVICE

| RESPIRATORY TRACT | MUSCULOSKELETAL SYSTEM | NERVOUS SYSTEM | CIRCULATORY SYSTEM
| DIABETES | DIGESTIVE TRACT | PREVENTION

We guarantee you a premium spa treatment using our unique natural healing waters. We use the natural carbonic water directly from the healing spring for the treatment of all diseases, it means for baths, inhalations and the drinking cure indeed. We are specialists on spa treatment of respiratory tract diseases in the Czech Republic. We can even treat one person for different diseases at the same time. Our unique mineral waters enable it. Favorable natural and climatic conditions help and complement the spa treatment. Our professional staff is carefully trained, has a long time experience and treats carefully all clients.



| DRINKING CURE

Doctors recommend drinking the healing mineral waters directly from the spring. Drinking cure has the best effect in diabetes mellitus and digestive tract diseases. It positively affects also whole respiratory tract. The best time for drinking mineral waters from the springs is in the morning before breakfast and in the afternoon before dinner. Springs named Vincentka, Ottovka and Aloiska are used for the drinking cure.

| INHALATIONS

When inhaled, mineral waters enter the airways in the form of a mist. Mineral waters of Luhačovice improve the function of airways mucous membrane; they have antiinflammatory effect and help to expectorate. Inhalations are suitable for preventive cleaning of the airways, too.

| NATURAL CARBONIC BATHS

For baths we use also local unique natural mineral springs. They are strongly mineralized iodine waters with the hydrogencarbonate-chlorid-sodium basis, having a significant volume of dissolved carbon dioxide. The baths use to have a temperature around 34 °C. The first cold impression disappears quickly. Bubbles of carbon dioxide cover whole body. The oxide is absorbed by the skin, improves blood circulation and has a favorable effect on the circulatory system.

Depending on the disease type, different special procedures complement whole treatment spectrum, e.g. classic and underwater massages, wraps (peat and paraffin), hydrotherapy, electrotherapy, therapeutic exercise, etc.



Spa treatment is provided under the supervision of a physician and as per prescribed individual treatment program. Based on an initial examination, our spa physician will prescribe you the most appropriate rehabilitation and procedures using our healing mineral waters.

SPA TREATMENT STAY



ALL INCLUDED SPA TREATMENT

- 7x accommodation with full board or half board at the hotel ALEXANDRIA****
- 1x initial medical examination
- prescription of individual treatment programme
- 18x treatment procedure according to the physician's prescription (6x large and 12x small procedure)
- 3x inhalation of mineral water
- entry to the swimming pool (see page 22–23)
- daily drinking cure of mineral water

Each following day:

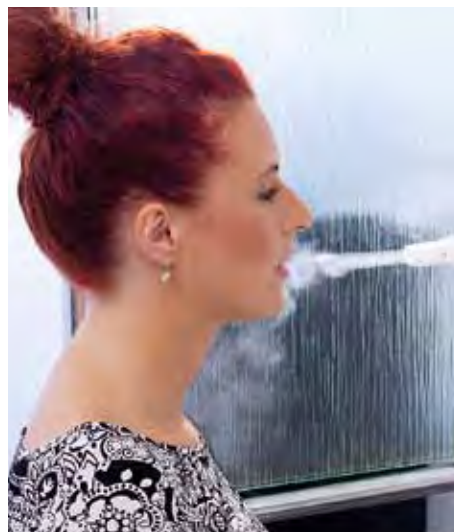
- 1x accommodation with full board or half board at the hotel ALEXANDRIA****
- 3x spa treatment procedure except Sunday (1x large and 2x small procedure)

Each additional week:

- 1x consultation with a physician
- 3x inhalation of mineral water

SINGLE ROOM AT NO EXTRA CHARGE

Single room at no extra charge if you order the stay for 21 nights or more.



SPECIAL OFFER

1 or 3 nights
FREE
OF CHARGE
14 = 13
21 = 18

Order our SPA TREATMENT STAY, have 14 or 21 nights and get 1 or 3 nights for free.

Prices in EUR per person:

| | | Winter season 02.01. – 26.02.2017 26.11. – 17.12.2017 | | | Low season 26.02. – 23.04.2017 08.10. – 26.11.2017 | | | High season 23.04. – 08.10.2017 | | |
|------------------------|------------|---|-----------------------|-----------------------|--|-----------------------|-----------------------|------------------------------------|-----------------------|-----------------------|
| | | 1/2 | 1/1 | S2 | 1/2 | 1/1 | S2 | 1/2 | 1/1 | S2 |
| | | 7 nights (1 night) | 7 nights (1 night) | 7 nights (1 night) | 7 nights (1 night) | 7 nights (1 night) | 7 nights (1 night) | 7 nights (1 night) | 7 nights (1 night) | 7 nights (1 night) |
| Palace**** | Comfort A | 497 (71) | 574 (82) | - | 553 (79) | 651 (93) | - | 651 (93) | 791 (113) | - |
| | Superior | 518 (74) | - | 595 (85) | 574 (82) | - | 672 (96) | 679 (97) | - | 826 (118) |
| Jurkovičův dům**** (1) | Superior | 567 (81) | 651 (93) | - | 609 (87) | 714 (102) | - | 665 (95) | 784 (112) | - |
| | Lux | 609 (87) | - | 679 (97) | 658 (94) | - | 756 (108) | 721 (103) | - | 833 (119) |
| Alexandria**** (2) | Superior K | 595 (85) | 707 (101) | - | 630 (90) | 763 (109) | - | 651 (93) | 791 (113) | - |
| | Lux K | 651 (93) | - | 721 (103) | 700 (100) | - | 777 (111) | 721 (103) | - | 805 (115) |

(1) Some procedures are not provided in Jurkovičův dům but in near buildings Central Spa or Inhalatorium.

(2) Medical examinations and healing procedures are provided at the hotel Palace****.

Notes: 1/2 – double room, 1/1 – single room, S2 – double bed suite (prices valid for fully occupied suite only), K – air-conditioning.
Price for each additional day is mentioned in parenthesis. Spa stay fee is not included. Room category description is to be found on page 24.
See the complete price list on www.SpaLuhacovice.cz.

SPINE REHABILITATION



INTENSIVE REHABILITATION IN 7/14/21 DAYS

- 7x accommodation with full board
- 1x initial medical examination
- active and passive therapy (9x large and 12x small procedure)
- daily drinking cure of mineral water
- SAMPLE PROGRAM – active therapy:**
 - 2x individual therapeutic exercise
 - 3x group therapeutic exercise
 - 1x individual training of Nordic Walking (basic instructions and technics)
 - rental of Nordic Walking poles for free
 - entry to the swimming pool (see page 23)

SAMPLE PROGRAM – passive therapy:

- 1x reflexology massage (1 set)
- 2x classic massage (partial)
- 1x underwater massage (automatic)
- 1x natural carbonic bath
- 2x natural carbonic bath with peat or Solfatan
- 1x effervescent bath
- 1x peat wrap on the back
- 5x spa procedure as prescribed by the physician (galvanic bath, two-chambered/four-chambered bath, ultrasound, paraffin wrap, whirlpool bath for lower/upper limbs, alternating bath, scottish shower)



SPECIAL OFFER

1 or 3 nights
FREE
OF CHARGE
14 = 13
21 = 18

Order our SPINE REHABILITATION, have 14 or 21 nights and get 1 or 3 nights for free.

SINGLE ROOM AT NO EXTRA CHARGE

Single room at no extra charge if you order the stay for 21 nights or more.

Our physician will confirm the procedures in the sample program based on your initial examination, or will change them if appropriate as per your current health condition.

The capacity of the Spine rehabilitation stay is limited.

Prices in EUR per person:

| | | Winter season 02.01. – 26.02.2017 26.11. – 17.12.2017 | | | Low season 26.02. – 23.04.2017 08.10. – 26.11.2017 | | | High season 23.04. – 08.10.2017 | | |
|------------|-----------|---|----------|----------|--|----------|----------|------------------------------------|----------|----------|
| | | 1/2 | 1/1 | S2 | 1/2 | 1/1 | S2 | 1/2 | 1/1 | S2 |
| | | 7 nights | 7 nights | 7 nights | 7 nights | 7 nights | 7 nights | 7 nights | 7 nights | 7 nights |
| Palace**** | Comfort A | 518 | 595 | - | 574 | 672 | - | 672 | 812 | - |
| | Superior | 539 | - | 616 | 595 | - | 693 | 700 | - | 847 |

Notes: 1/2 – double room, 1/1 – single room, S2 – double bed suite (prices valid for fully occupied suite only). Spa stay fee is not included. Room category description is to be found on page 24. See the complete price list on www.SpaLuhacovice.cz.

CURATIVE STAY



BASIC SPA PROGRAM for 7 DAYS or more

- 7x accommodation with full board or half board at the hotel ALEXANDRIA****
- 1x consultation with a physician
- entry to the swimming pool (see page 22–23)
- daily drinking cure of mineral water

SPA PROGRAM

AT THE HOTEL PALACE**** / JURKOVIČŮV DŮM****

- 12x treatment procedure according to the physician's prescription (6x large and 6x small procedure)

SPA PROGRAM

AT THE HOTEL ALEXANDRIA****

- 1x natural carbonic bath
- 1x basic diagnostics on bio-impedance scales
- 10x spa procedure as prescribed by the physician (max. 25 min.)

Each following day:

- 1x accommodation with full board or half board at the hotel ALEXANDRIA****
- 2x spa treatment procedure except Sunday (1x large and 1x small procedure or 2x procedure, max. 25 min., at the hotel ALEXANDRIA)



SPECIAL OFFER

**3 nights
FREE
OF CHARGE**

21 = 18

**SINGLE ROOM
AT NO EXTRA
CHARGE**

Order our CURATIVE STAY, have 21 nights or more and get 3 nights for free.

Single room at no extra charge if you order the stay for 21 nights or more.

Prices in EUR per person:

| | | Winter season 02.01.–26.02.2017 26.11.–17.12.2017 | | | Low season 26.02.–23.04.2017 08.10.–26.11.2017 | | | High season 23.04.–08.10.2017 | | |
|--------------------|------------|---|-----------------------|-----------------------|--|-----------------------|-----------------------|----------------------------------|-----------------------|-----------------------|
| | | 1/2 | 1/1 | S2 | 1/2 | 1/1 | S2 | 1/2 | 1/1 | S2 |
| | | 7 nights (1 night) | 7 nights (1 night) | 7 nights (1 night) | 7 nights (1 night) | 7 nights (1 night) | 7 nights (1 night) | 7 nights (1 night) | 7 nights (1 night) | 7 nights (1 night) |
| Palace**** | Comfort A | 378 (54) | 455 (65) | - | 448 (64) | 546 (78) | - | 525 (75) | 665 (95) | - |
| | Superior | 399 (57) | - | 476 (68) | 469 (67) | - | 567 (81) | 553 (79) | - | 700 (100) |
| Jurkovičův dům**** | Superior | 448 (64) | 532 (76) | - | 504 (72) | 609 (87) | - | 616 (88) | 735 (105) | - |
| | Lux | 490 (70) | - | 560 (80) | 553 (79) | - | 651 (93) | 672 (96) | - | 784 (112) |
| Alexandria**** | Superior K | 588 (84) | 700 (100) | - | 623 (89) | 756 (108) | - | 679 (97) | 819 (117) | - |
| | Lux K | 644 (92) | - | 714 (102) | 693 (99) | - | 770 (110) | 749 (107) | - | 833 (119) |

Notes: 1/2 – double room, 1/1 – single room, S2 – double bed suite (prices valid for fully occupied suite only), K – air-conditioning.

Prices for each additional day are mentioned in parenthesis. Spa stay fee is not included. Room category description is to be found on page 24.

See the complete price list on www.SpaLuhacovice.cz.

SPA FOR A TRY



YOUR OWN EXPERIENCE IS THE BEST

- 7x accommodation with half board
- 1x consultation with the physician ⁽¹⁾
- 1x natural carbonic bath
- 4x spa procedure (small) as per the prescription of the physician or 4x wellness procedure (max. 25 min.) as per your own choice at the hotel Alexandria****
- 5x inhalation of mineral water ⁽²⁾
- entry to the swimming pool (see page 22–23)
- daily drinking cure of mineral water
- 1x tour through Luhačovice with a guide
- rental of Nordic Walking poles for free



SPA FOR A TRY WITH MUSIC

Are you a music lover? Try our special stay Spa for a try with music. It will take place from 16th to 23rd of July, 2017. As a BONUS you will get a free permanent ticket for all concerts of the 26th Festival Janáček and Luhačovice.

BONUS TO YOUR TRIP TO LUHAČOVICE

**TRANSFER
FOR FREE**

We offer you a special regular transfer (each Sunday) for free from Vienna (Westbahnhof station) to Luhačovice or you can enjoy free parking during your whole stay.

Prices in EUR per person:

| | | Winter season 02.01.–26.02.2017 26.11.–17.12.2017 | | | Low season 26.02.–23.04.2017 08.10.–26.11.2017 | | | High season 23.04.–08.10.2017 | | |
|-----------------------------------|------------|---|----------|----------|--|----------|----------|----------------------------------|----------|----------|
| | | 1/2 | 1/1 | S2 | 1/2 | 1/1 | S2 | 1/2 | 1/1 | S2 |
| | | 7 nights | 7 nights | 7 nights | 7 nights | 7 nights | 7 nights | 7 nights | 7 nights | 7 nights |
| Palace**** | Comfort A | 377 | 454 | - | 419 | 517 | - | 517 | 657 | - |
| | Superior | 398 | - | 475 | 440 | - | 538 | 545 | - | 692 |
| Jurkovičův dům**** ⁽²⁾ | Superior | 426 | 510 | - | 468 | 573 | - | 517 | 636 | - |
| | Lux | 468 | - | 538 | 517 | - | 615 | 573 | - | 685 |
| Alexandria**** ^{(1) (2)} | Superior K | 566 | 678 | - | 601 | 734 | - | 650 | 790 | - |
| | Lux K | 622 | - | 692 | 671 | - | 748 | 720 | - | 804 |

(1) When accommodated at the hotel Alexandria****, the medical consultation is not included in the price.

(2) Clients accommodated at hotels Jurkovičův dům and Alexandria have their inhalations at the Inhalatorium building.

Notes: 1/2 – double room, 1/1 – single room, S2 – double bed suite (prices valid for fully occupied suite only), K – air-conditioning.

Room category description is to be found on page 24. Find the complete price list on www.SpaLuhacovice.cz.

RELAXING DAYS

REAL RELAX for 3 nights or more

- 7/4/3x accommodation with bufet half board
- Spa package for 7, 4 or 3 days
- free entry to the swimming pool and whirlpool or free entry to the wellness centre and fitness centre at the hotel ALEXANDRIA****
- bathrobe
- daily drinking cure of mineral water

Spa package for 7 / 4 days

7 nights / Sun – Sun

- 1x natural carbonic bath
- 1x effervescent bath with aromatic essence
- 1x classic massage (partial)
- 1x massage with essential oils (partial)
- 1x peat wrap on the back

4 nights / Sun – Thu

- 1x natural carbonic bath
- 1x automatic underwater massage
- 1x classic massage (partial)
- 1x massage with essential oils (partial)

Swapping of procedures within the stay package is not possible.

Prices in EUR per person:

| | | | Winter season 02.01.–26.02.2017 26.11.–17.12.2017 | | | Low season 26.02.–23.04.2017 08.10.–26.11.2017 | | | High season 23.04.–08.10.2017 | | |
|--------------------|------------|-----|---|----------|-----|--|----------|-----|----------------------------------|----------|-----|
| | | | 7 nights | | | 7 nights | | | 7 nights | | |
| | | | 4 nights | 3 nights | | 4 nights | 3 nights | | 4 nights | 3 nights | |
| Jurkovičův dům**** | Superior | 1/2 | 413 | 240 | 240 | 455 | 261 | 261 | 511 | 285 | 285 |
| | | 1/1 | 497 | 300 | 300 | 560 | 330 | 330 | 630 | 363 | 363 |
| | Lux | 1/2 | 455 | 270 | 270 | 504 | 297 | 297 | 567 | 321 | 321 |
| | Suite | S2 | 525 | 324 | 324 | 602 | 360 | 360 | 679 | 393 | 393 |
| Alexandria**** | Superior K | 1/2 | 497 | 276 | 276 | 532 | 297 | 297 | 553 | 312 | 312 |
| | | 1/1 | 609 | 348 | 348 | 665 | 378 | 378 | 693 | 402 | 402 |
| | Lux K | 1/2 | 553 | 312 | 312 | 602 | 339 | 339 | 623 | 357 | 357 |
| | Suite | S2 | 623 | 357 | 357 | 679 | 390 | 390 | 707 | 411 | 411 |

Notes: 1/2 – double room, 1/1 – single room, S2 – double bed suite (prices valid for fully occupied suite only), K – air-conditioning.
Spa stay fee is not included. Room category description is to be found on page 24. Find the complete price list on www.SpaLuhacovice.cz.



Spa package for 3 days

JURKOVIČŮV DŮM**** | 3 nights/ Thu – Sun

- 1x natural carbonic bath
- 1x effervescent bath
- 1x classic massage (partial)
- 1x massage with essential oils

ALEXANDRIA**** | 3 nights / Thu – Sun

- 1x relaxing bubble bath
- 1x massage with essential oils
- 1x Rasul – oriental cleansing cure in a steam bath for couples, or peat wrap on the back for individuals



SPECIAL OFFER

1 or 3 nights
FREE
OF CHARGE
14 = 13
21 = 18

Order our HOTEL ACCOMMODATION, have 14 or 21 nights and get 1 or 3 nights for free.

SINGLE ROOM
AT NO EXTRA
CHARGE

Single room at no extra charge if you order the stay for 21 nights or more.

Prices in EUR per person:

| | | Winter season 02.01.–26.02.2017 26.11.–17.12.2017 | | | Low season 26.02.–23.04.2017 08.10.–26.11.2017 | | | High season 23.04.–08.10.2017 | | |
|--------------------|------------|---|-----------------------|-----------------------|--|-----------------------|-----------------------|----------------------------------|-----------------------|-----------------------|
| | | DZ | EZ | A2 | DZ | EZ | A2 | DZ | EZ | A2 |
| | | 7 nights (1 night) | 7 nights (1 night) | 7 nights (1 night) | 7 nights (1 night) | 7 nights (1 night) | 7 nights (1 night) | 7 nights (1 night) | 7 nights (1 night) | 7 nights (1 night) |
| Palace**** | Comfort A | 406 (52) | 539 (71) | - | 469 (61) | 623 (83) | - | 595 (79) | 805 (109) | - |
| | Superior | 434 (56) | - | 574 (76) | 504 (66) | - | 672 (90) | 644 (86) | - | 861 (117) |
| Jurkovičův dům**** | Superior | 469 (57) | 609 (77) | - | 518 (64) | 679 (87) | - | 574 (72) | 756 (98) | - |
| | Lux | 539 (67) | - | 665 (85) | 602 (76) | - | 749 (97) | 658 (84) | - | 826 (108) |
| Alexandria**** | Superior K | 553 (69) | 721 (93) | - | 602 (76) | 791 (103) | - | 637 (81) | 847 (111) | - |
| | Lux K | 637 (81) | - | 742 (96) | 700 (90) | - | 819 (107) | 742 (96) | - | 868 (114) |

Notes: 1/2 – double room, 1/1 – single room, S2 – double bed suite (prices valid for fully occupied suite only), K – air-conditioning.
Prices for 1 night with breakfast are mentioned in parenthesis. Spa stay fee is not included. Room category description is to be found on page 24.
Find the complete price list on www.SpaLuhacovice.cz.

HOTEL ACCOMMODATION

ACCOMMODATION WITHOUT SPA TREATMENTS

7 nights

- 7x accommodation with half board
- entry to the swimming pool (see page 22–23)
- daily drinking cure of mineral water

1 night (prices are mentioned in parenthesis)

- 1x accommodation with buffet breakfast
- entry to the swimming pool (see page 22–23)
- daily drinking cure of mineral water

Discounts for children

(if accommodated in the same room with an adult person)

| | |
|--------------|---|
| 0 – 3 years | FREE OF CHARGE (without any service) |
| 3 – 12 years | 50 % discount on accommodation |

PRICE LIST FOR TREATMENT PROCEDURES AT SPA LUHAČOVICE

The prices for treatment procedures are in EUR, approximate and valid for individually purchased procedures only. ⁽¹⁾

| TREATMENT PROCEDURE | | Palace | Jurkovičův dům | Alexandria | Central Spa Inhalatorium |
|---|-------|--------|---|------------|--------------------------|
| Natural healing mineral water | | | | | |
| Drinking cure | | | directly from the mineral springs (Vincentka and Alioska) | | |
| Individual inhalation of mineral water | S | 8 | 6 | - | 7 |
| Group inhalation of mineral water | MD,S | 6 | - | - | 5 |
| Natural carbonic bath | L,W/2 | 17 | 19 | 20 | 15 |
| Hydrotherapy | | | | | |
| Effervescent bath | S | 13 | 14 | 15 | 12 |
| Effervescent bath with ingredients | L | 16 | 18 | 19 | 14 |
| Peat bath | L,W/2 | 19 | - | - | 17 |
| Humic bath | L | 19 | 19 | - | 17 |
| Solfatan bath | L,W/2 | 19 | 19 | - | 17 |
| Iodine-bromine bath | * | 22 | 22 | - | 20 |
| Whirlpool bath for lower (upper) limbs | S | 8 | - | - | 8 |
| Alternating bath for limbs | L | 13 | - | - | - |
| Alternating baths for legs | S | 8 | - | - | 8 |
| Massages | | | | | |
| Classic massage (partial) | S | 9 | 10 | 18 | 8 |
| Essential oil massage (partial) | S | 10 | 11 | 19 | 9 |
| Manual underwater massage | L | 15 | 16 | - | 13 |
| Automatic underwater massage | L | 13 | 15 | 16 | 12 |
| Manual lymphatic drainage (1 limb) | MD,L | 22 | 24 | 27 | 20 |
| Instrumental lymphatic drainage (30 minutes) | MD,S | 11 | 12 | 15 | 10 |
| Reflexology massage (1 set) | MD,L | 17 | 19 | 18 | 16 |
| Thermotherapy | | | | | |
| Peat wrap (on 2 parts of the body) | L,W/2 | 12 | 13 | 19 | 11 |
| Paraffin wrap (on 2 parts of the body) | S | 8 | - | - | 7 |
| Kinesiotherapy | | | | | |
| Individual therapeutic exercise | MD,L | 16 | 17 | - | 14 |
| Group therapeutic exercise | S | 3 | - | - | 3 |
| Group therapeutic exercise in the swimming pool | S | 5 | 6 | - | 5 |
| Swimming in the pool – supervised (30 minutes) | S | 2 | ** | ** | 2 |
| Other therapies | | | | | |
| Ultrasound | MD,S | 5 | 5 | - | 4 |
| Gas injection | MD,S | 5 | - | - | 5 |
| Oxygen therapy (30 minutes) | S | 9 | 10 | - | 8 |
| Aromatherapy | S | 5 | 5 | - | 4 |
| Medical examinations | | | | | |
| Acute medical treatment | | 15 | 15 | *** | 15 ⁽²⁾ |

We offer a wide selection of original wellness procedures and rituals. Try different therapies full of colors, fragrances, cleansing peelings and beauty wraps caring for your health, face and body.



| WELLNESS PROCEDURES | | Alexandria | Jurkovičův dům | Palace | Central Spa Inhalatorium |
|--|---|------------|----------------|--------|--------------------------|
| Wellness baths | W | 19 | 21 | 19 | 18 |
| Aromatic cream massage | W | 18 | 11 | 10 | 9 |
| Indian head massage (25 minutes) | W | 19 | 19 | 17 | 16 |
| Anti-cellulite massage (45 minutes) | W | 22 | 22 | 21 | - |
| Honey massage (25 minutes) | W | 19 | 19 | 17 | 16 |
| Hot chocolate massage (25 minutes) | W | 19 | 19 | 17 | 16 |
| Hot lava stone massage (25 minutes) | W | 19 | 19 | 17 | - |
| Beeswax wrap (15 minutes) | W | 17 | 20 | - | 19 |
| Spa facial ritual | W | from 33 | 25 | - | - |
| Spa body ritual | W | from 50 | 48 | - | - |
| Fee for changing the time of a procedure already scheduled | | 2 | 2 | 2 | 2 |

- ▲ Notes:
 (1) Customers pay the treatment procedures on site in CZK as per currently valid price lists.
 (2) Medical examinations are provided in the Spa Polyclinic.

* not belonging to large procedures (for direct payment only), ** free entry, *** at the hotel Palace
 MD – procedures can be prescribed by a physician only, W/2 – can be purchased without a physician's prescription, these procedures can be undergone maximum twice a week, S – small procedure, L – large procedure, W – wellness procedure



ALEXANDRIA★★★★



| WELLNESS HOTEL WITH FIRST CLASS SERVICES
| LUXURY WELLNESS CENTRE IN A STYLE OF OLD ROMAN BATHS
| SENSATION GASTRONOMY AT A RENOWNED FRENCH RESTAURANT

| | |
|------------------------|---|
| LOCATION | downtown |
| ROOMS | Superior (K) Lux (Plus, K, Plus K) Suite |
| 106 beds | TV/SAT FREE Wi-Fi telephone mini bar safe hairdryer bathrobe air-conditioning (rooms marked with K) |
| HOTEL SERVICES | reception, exchange point, internet point, lobby bar, night club |
| BOARDING | buffet breakfast and dinner in the hotel restaurant, lunch à la carte at the French restaurant |
| SPA SERVICES | natural carbonic baths, other spa procedures, possible spa treatment at the hotel Palace |
| WELLNESS | wellness procedures, luxury face and body spa rituals |
| WELLNESS CENTRE | FREE entry – swimming pool, whirlpool, Kneipp path, sauna world (5 kinds of sauna) |



| | |
|-----------------------|---|
| FITNESS CENTRE | FREE entry |
| IMPORTANT | Children from 12 years only elevator, smoking forbidden, animals not allowed |
| PARKING | for an extra charge – roofed parking (approx. 100 m) |

JURKOVIČŮV DŮM****

| HOTEL IN THE FOLK ART NOUVEAU STYLE
| ALL SERVICES UNDER ONE ROOF



| | |
|-----------------------|--|
| LOCATION | in quiet spa centre (across the Colonnade) |
| ROOMS | Comfort Superior Lux Suite |
| 80 beds | TV/SAT FREE Wi-Fi telephone mini bar small safe hairdryer bathrobe |
| HOTEL SERVICES | reception, exchange point, internet point, hairdresser's, lobby bar |
| BOARDING | buffet breakfast and dinner, lunch by choosing in advance from a lunch menu, salad buffet |
| SPA SERVICES | physician, natural carbonic baths and other spa procedures, sauna |
| SWIMMING POOL | FREE entry to the swimming pool and whirlpool (children under 12 years in allotted time and accompanied by an adult person only) |
| IMPORTANT | elevator, smoking forbidden, animals not allowed |
| PARKING | for an extra charge – at the Spa Theater (approx. 100 m), spa garages (approx. 600 m) |

PALACE****

| THE BIGGEST SPA HOTEL IN LUHAČOVICE
| ALL SERVICES UNDER ONE ROOF
| HOLDER OF THE PRESTIGIOUS CERTIFICATE EUROSPAMED



| | |
|-----------------------|--|
| LOCATION | downtown |
| ROOMS | Comfort B Comfort A (Plus) Superior (Plus) Suite |
| 235 beds | TV/SAT FREE Wi-Fi telephone mini bar small safe hairdryer bathrobe (in rooms Superior and Suite) |
| HOTEL SERVICES | reception, exchange point, internet point, hairdresser's, cosmetics, pedicure, cafe |
| BOARDING | buffet breakfast, lunch and dinner by choosing in advance from 7 menus, salad buffet |
| SPA SERVICES | physician, non-stop nurse service, natural carbonic baths, inhalations and more than other 60 spa procedures, sauna |
| SWIMMING POOL | FREE ENTRY only when accommodated in rooms Superior and Suite – entry in allotted time as per free capacity and after prior reservation (one hour per day) |
| IMPORTANT | elevator, smoking forbidden, animals not allowed |
| PARKING | for an extra charge – hotel garages, roofed parking (approx. 100 m) |

ALPSKÁ RŮŽE****

LUXURY APARTMENT ACCOMMODATION
PROCEDURES IN NEAR SPA FACILITIES
SELF-COOKING POSSIBLE



DŮM B. SMETANY****

ART NOUVEAU HOTEL IN THE SPA CENTRE
PROCEDURES IN NEAR SPA FACILITIES



| | |
|----------------|---|
| LOCATION | in quiet spa centre |
| ROOMS | 20 beds |
| HOTEL SERVICES | reception at the hotel Jurkovičův dům****, boarding at the hotel Společenský dům (approx. 50 m), self-cooking possible, accommodation without boarding possible |
| SPA SERVICES | physician and procedures in near spa facilities (Spa Polyclinic, Central Spa and Inhalatorium, approx. 150 – 400 m), FREE entry to the swimming pool and whirlpool (1 hour a day, 2 hours a day if accommodated in a suite) at the hotel Jurkovičův dům**** |
| IMPORTANT | smoking forbidden, animals not allowed |
| PARKING | for an extra charge – by the villa, spa garages (approx. 300 m) |

| | |
|----------------|---|
| LOCATION | in quiet spa centre |
| ROOMS | 54 beds |
| HOTEL SERVICES | reception, exchange point, restaurant (buffet breakfast), snack bar, safe at the reception, internet point |
| SPA SERVICES | physician and spa procedures in near spa facilities (Spa Polyclinic, Central Spa and Inhalatorium, approx. 150 – 300 m) |
| IMPORTANT | elevator, smoking forbidden, animals not allowed |
| PARKING | for an extra charge – at the spa area (approx. 150 m), spa garages (approx. 300 m) |

CHOOSE THE ACCOMMODATION...

| ROOM | ROOM EQUIPMENT | | | | | | | | | | HOTELS |
|--------------|----------------------|--------|-------|-----------|---------|-------|----------|-----------|------------------|-----|---|
| | Bathroom with toilet | TV/SAT | Wi-Fi | TELEPHONE | MINIBAR | SAFE | BATHROBE | HAIRDRYER | AIR-CONDITIONING | (2) | |
| Comfort | ● | ● | ● | ● | ● | ● (3) | (4) | ● | | | PALACE JURKOVIČŮV DŮM DŮM B. SMETANY |
| Superior | ● | ● | ● | ● | ● | ● | ● | ● | | | PALACE JURKOVIČŮV DŮM ALEXANDRIA |
| Superior K | ● | ● | ● | ● | ● | ● | ● | ● | ● | | ALEXANDRIA |
| Lux (1) | ● | ● | ● | ● | ● | ● | ● | ● | | | JURKOVIČŮV DŮM ALEXANDRIA |
| Lux K (1) | ● | ● | ● | ● | ● | ● | ● | ● | ● | | ALEXANDRIA |
| Suite | ● | ● | ● | ● | ● | ● | ● | ● | (5) | | PALACE JURKOVIČŮV DŮM ALEXANDRIA DŮM B. SMETANY |
| Studio Suite | ● | ● | ● | ● | | ● | (6) | ● | | ● | ALPSKÁ RŮŽE |

Notes:
(1) double rooms with extra space (2) cooker, kettle, kitchenware, fridge (3) at the reception of the hotel Dům B. Smetany
(4) only at the hotel Jurkovičův dům (5) only at the hotel Alexandria (6) only in a suite
The letters in the description of the hotel rooms (see page 22–24) indicate the location in the building (A – in the front or side part of the building, B – in the rear tract of the building). The mark PLUS means a room with balcony for an extra charge.

ROOM CATEGORIES LISTED IN THE PRICE LIST

The price list shows only prices for stays when accommodated in the chosen room category.

Prices for stays with accommodation in other room categories, not mentioned in the price list, can be found on our website or can be e-mailed or sent by post upon your request.

LEISURE TIME AND CULTURAL ACTIVITIES IN LUHAČOVICE

Our spa has always been a center of social life and rich on cultural events. Cultural summer with colonnade concerts, music and theatre festivals is an integral part of the life in Luhačovice each year.

The city is full of cozy cafes and patisseries. When the weather is nice, most of them open their outside gardens with seatings. Let the spa serenity, murmuring of fountains and Colonnade music or concerts impress you when enjoying good coffee or a glass of excellent wine. Spa Colonnade full of historical costumes or original fashion accessories – that's also a part of the rich culture of Luhačovice.



EVENT CALENDAR 2017

| | |
|---|--|
| 1 st January | NEW YEAR'S CONCERT |
| 28 th January | 21 ST REPRESENTATIVE SPA BALL |
| 12 th – 14 th May | OPENING OF SPRINGS |
| May – September | COLONNADE CONCERTS |
| 5 th – 10 th June | BEAUTY HIDDEN IN WOOD |
| 22 nd June | MUSIC OF THE CASTLE GUARD AND POLICE OF THE CZECH REPUBLIC |
| 17 th – 21 st July | FESTIVAL JANÁČEK AND LUHAČOVICE |
| 31 st July – 11 th August | ACADEMY OF VÁCLAV HUDEČEK |
| 6 th – 9 th September | DAYS OF SLOVAK CULTURE IN LUHAČOVICE |
| 10 th September | HAT DAY with Calma – beautification club of Luhačovice |
| 15 th – 19 th September | INTERNATIONAL FESTIVAL OF CHILDREN'S FOLKLOR ENSAMBLES |



ACTIVE HOLIDAYS IN LUHAČOVICE

Luhačovice doesn't offer only spa treatment. They are also an ideal place for your active holidays. Enhance your physical condition.

WALKING | NORDIC WALKING | BIKING | TENNIS

Several adapted spa paths lead through Luhačovice and its green surroundings. Experienced hikers will enjoy local marked hiking trails that begin in Luhačovice. The trails will guide you through the beautiful spa surroundings and protected landscape area White Carpathians. Luhačovice has unique clay tennis courts directly in the spa area near the springs.



LUHAČOVICE AND SURROUNDINGS

The location of our spa allows our guests to visit nearby historical monuments or landmarks. Visit local castles, palaces, open-air museums and other tourist attractions. You can make a trip to the near Buchlov Castle or Castle Buchlov, visit the open-air museum in Rožnov pod Radhoštěm, go to the pilgrimage place Velehrad or the town Vizovice where you can see the castle and the best known Czech distillery Jelínek.

Choose from a wide tours selection that was prepared for you by our travel agency Luhanka.



CASTLE BUCHLOV



Czech distillery JELÍNEK

TRIPS TO THE SURROUNDINGS OF LUHAČOVICE

Our information and travel agency named Luhanka organizes a number of excursions and trips to the surrounding area. We offer group or individual tours according to the requirements of our customers. In case of interest we can provide an English-speaking guide.

ZLÍN

Zlín is the administrative and commercial centre of the whole Zlín region. It offers a wide number of cultural, social, sport and shopping opportunities. The „Zlín Skyscraper“ provides a wonderful view over the whole city from the terrace on its 16th floor.

VIZOVICE

Vizovice is famous for its local liqueur company Rudolf Jelínek, a.s. which produces traditional Czech liquors. A baroque castle in Vizovice is worth visiting for its rich collections of art furniture, porcelain, weapons and a rare collection of the Dutch paintings.

OLOMOUC

Olomouc is an important city of the Czech Republic. After Prague, it is the second largest Czech cultural reservation registered in the UNESCO World Heritage list. The most famous monument in Olomouc is the Town Hall with its Astronomical Clock.



KROMĚŘÍŽ

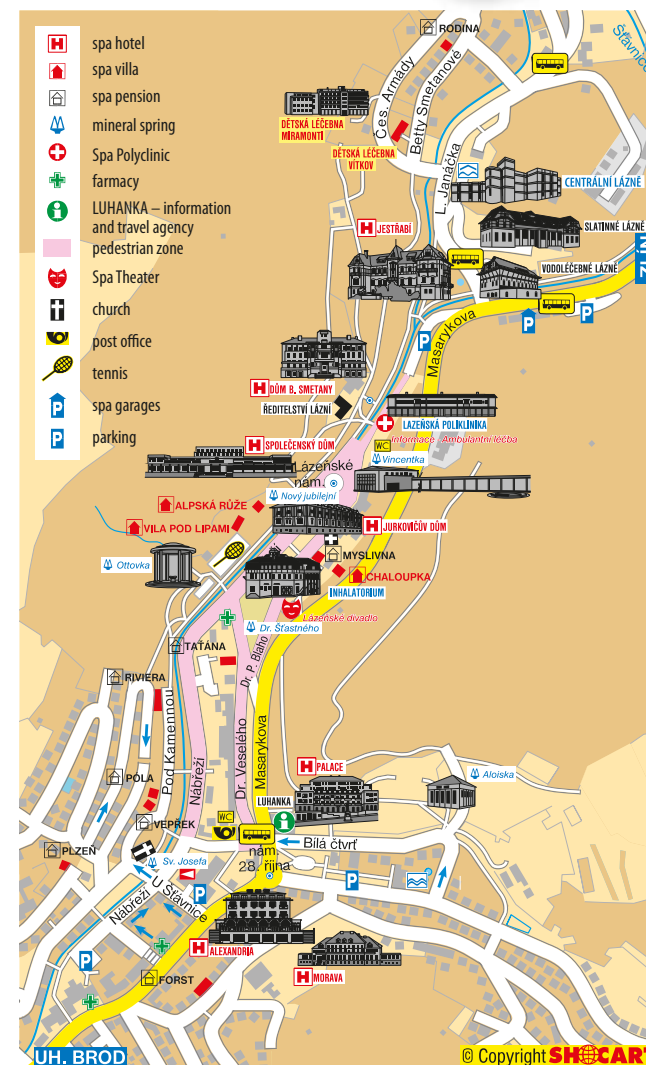
In Kromeríž you will find a unique set of architectural monuments and lovely gardens, which both placed Kromeríž on the UNESCO World Heritage list. The city is also called as the „Athens of Haná“. One of its significant historical monuments is the Archbishop's Castle with majestic interiors and a castle picture gallery.

BUCHLOVICE

The castle Buchlov is rising above the town Buchlovce. It belongs to the most important monuments of the early Czech gothic. Other castle in Buchlovce was built in the baroque style together with its large English park. There are a lot of exotic trees in the park, being one of the most significant dendrology collections in the Czech Republic.



FOR YOUR ORIENTATION



INFORMATION TO STAYS

STAYS ORDERING

Use our online order form on www.SpaLuhacovice.cz to order your stay. The order must contain: name and surname, date of birth, permanent residence, contact (phone, e-mail), nationality, name of the stay, number of persons, date of arrival, length of the stay (number of nights), the place of accommodation and the room category.

VISA

In case you apply for the Schengen Visa for the treatment or tourist purposes, you will need us to issue an order confirmation of your stay for you. In order we could do so, please provide us with following information: name and surname (in the Latin alphabet), your passport number and date of your birth. The order confirmation will be issued in English language.

MEDICAL REPORT

We recommend to all customers who are undergoing long-term medical treatment to bring with them a report from their physician to the stay at our facility.

PRICE AND PAYMENT

Prices of the stay include services specified for each individual stay. In case the stay takes place in a period of two seasons, the final price will be calculated as per each season separately.

Prices don't include any insurance. Payment of the stay can be done through:

1| bank transfer 2| payment card 3| online by payment card 4| in cash

| | |
|--------------|---|
| BANK DETAILS | Komerční banka, a.s. |
| ACCOUNT NO | 27-770590297/0100 |
| SWIFT CODE | KOMBCZPPXXX |
| IBAN | CZ3901000000270770590297 |
| RECIPIENT | Spa Luhačovice, a.s., Lázeňské náměstí 436, 763 26 Luhačovice, CZ |

We accept payment cards: VISA, JCB, DINERS CLUB INTERNATIONAL, EUROCARD, MasterCard, American Express.

HEALTH INSURANCE

Prices of stays don't include any insurance. We recommend to our customers to take out travel insurance before traveling. SPA FEE Each visitor accommodated in the town for the treatment or recreation is obliged to pay a spa fee. Persons over 70 years and children under 18 years are exempt from the fee.

CANCELLATION FEE

The customer has the right to cancel the ordered stay anytime. Cancellation fee is calculated from the total agreed order value as following:

| Cancellation done | Stays from 2 nd January till 20 th December | Stays from 20 th December till 2 nd January and Easter stays |
|---|---|--|
| 28 days or more before arrival | 10 %, min. 12 EUR/person | 30 % |
| 27 – 14 days before arrival | 20 % | 50 % |
| 13 – 3 days before arrival | 50 % | 80 % |
| 2 days or less before arrival or no cancellation done | 100 % | 100 % |

BOARDING

Breakfasts have a form of a buffet, lunch and dinner are served. Our guests can choose from a menu of 7 different meals. The hotels Alexandria and Jurkovičův dům prepare dinners also as a buffet. We can make reduction, low fat, low cholesterol and diabetes diets. Vegetarian diet is also possible. Accommodation with half board includes breakfast and dinner.

Full board (breakfast, lunch, dinner) is possible for an extra charge. Hotel Alexandria serves the lunch in the French restaurant; guests choose from the actual daily lunch menu or regular cart du jour.

| Price in EUR per lunch | Hotel Jurkovičův dům/Alexandria ⁽¹⁾ | Other hotels |
|------------------------|--|--------------|
| Lunch | 8 ⁽¹⁾ | 6 |

(1) In the hotel Alexandria it means an advance payment 8 EUR for the lunch in the French restaurant. Customers can choose from the actual daily lunch menu or from the regular cart du jour. Minimal price of the final bill must be 8 EUR. The customer must pay any consuming beyond the advance payment on site.

DISCOUNT COUPONS

Each guest will receive a booklet with discount coupons and the list of actual price advantages for all Spa Luhačovice guests after his arrival. Our clients can enjoy much lower entry fee to the wellness and fitness center at the ALEXANDRIA**** Spa & Wellness hotel and the swimming pool at the Central Spa. The Travel Agency Luhanka has prepared significant discounts on tours for our guests, too.

IMPORTANT INFORMATION

With regard to the treated diseases, it is not possible to stay in our spa hotels with dogs and other animals. It is forbidden to smoke in all spa hotels and pensions.

TRANSFER TO LUHAČOVICE

Ask us for the comfortable transport from the airport to our spa hotels in Luhačovice.

| Airport | Distance | Price in EUR ⁽¹⁾ / car ⁽²⁾ | Airport | Distance | Price in EUR ⁽¹⁾ / car ⁽²⁾ |
|-------------|----------|--|-----------------|----------|--|
| Prague (CZ) | 310 km | 200 | Bratislava (SK) | 150 km | 100 |
| Brno (CZ) | 100 km | 70 | Vienna (A) | 180 km | 140 |

Notes: (1) 1 way, (2) max. 3 adults

CHANGE OF SERVICES AND PRICES LISTED IN THE CATALOGUE IS RESERVED.



YOUR JOURNEY TO THE HEALTH AND WELLNESS...

Lázně Luhačovice, a.s.
Lázeňské nám. 436, 763 26 Luhačovice, CZECH REPUBLIC
Tel.: +420 577 682 330, Fax: +420 577 682 209
E-Mail: reservation@spaluhacovice.cz
www.SpaLuhacovice.cz



JÁCHYMOV RADON SPA | LUHAČOVICE SPA

SPA & WELLNESS NATURE RESORTS



| Distances | JÁCHYMOV RADON SPA | LUHAČOVICE SPA |
|-----------|--------------------|----------------|
| Praha | 140 km | 325 km |
| Berlin | 350 km | 650 km |
| Dresden | 150 km | 460 km |
| Leipzig | 150 km | 570 km |
| Nürnberg | 230 km | 610 km |
| Vienna | 470 km | 180 km |



SPA FOR YOUR HEALTH



Booking & Information:
 Léčebné Lázně Jáchymov a.s.
 T. G. Masaryka 415, CZ-362 51 Jáchymov
 Tel.: +420 353 833 333
 E-mail: info@laznejachymov.cz
www.radonspa.com



SPA & WELLNESS NATURE RESORTS
JÁCHYMOV RADON SPA & LUHAČOVICE SPA
 the biggest spa group in the Czech Republic
SPA & WELLNESS NATURE RESORTS



THE CZECH ASSOCIATION
OF HOTELS
AND RESTAURANTS



LAZNE LUHAČOVICE
facebook



Booking & Information:
 Lázně Luhačovice, a.s.
 Lázeňské nám. 436, CZ-763 26 Luhačovice
 Tel.: +420 577 682 330, Fax: +420 577 682 209
 E-mail: reservation@spaluhacovice.cz

www.SpaLuhacovice.cz

